

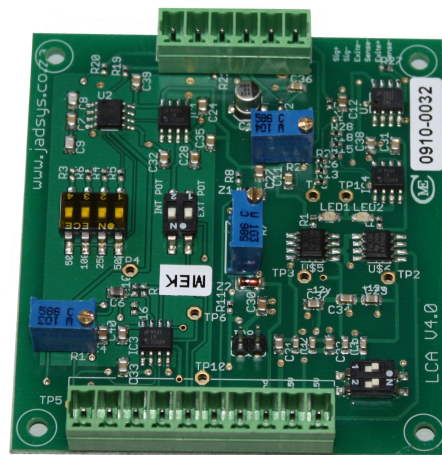
JAD LCA ver 4.0 Load cell amplifier board

Purpose

The JAD load cell amplifier board converts mv signals from a load cell to a 0V to 10V range that can be dealt with in normal data acquisition equipment.

Description

The JAD LCA ver 4 is an extremely robust and cost-effective linear load cell amplifier that has a gain range from 100X to 1000X amplification of the input signal. The unit also has a built in 10Hz filter and a 6 wire excitation control system for use in long wire applications.



Advantages

- Low cost, available off the shelf at JAD
- Tried and tested in harsh environments throughout Africa.
- Connections for external zero potentiometer.
- Allowance for high bandwidth output as well as a standard 10Hz bandwidth output.
- Mountable in 72mm Phoenix din rail boat system.

Specifications

- 6 / 4 wire system.
- Passive Input low pass EMF filter.
- 10 Hz third order output filter.
- 80 dB minimum CMRR to 10 kHz .
- Low noise 8 nV/√Hz .
- Excitation range 0 – 10 V 0.01V stable.
- Zero range -0.5mV/V to 0.5mV/V @ X1000
- Course gain setting;
 - X100
 - X200
 - X500
 - X1000
 - Infinite fine adjust per range
- Temp range -10 to 55 DegC.
- Dual supply -15 to 15V to -24 to 24V